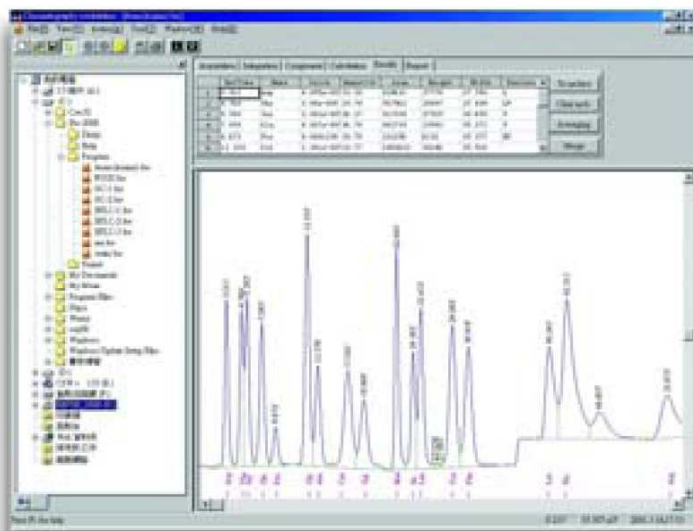


CHROMATOGRAPHY DATA SYSTEM

- Model No. Peak-2000S (Single-channel)
- Model No. Peak-2000D (Dual-channel)



Description

- This software can be connected to all chromatography system, such as GC, HPLC, CPC, IC, CE, and it can replace all traditional recorder and integrator as well.
- It is compatible with Agilent, Hitachi, Jasco, Perkin-Elmer, Shimadzu, Thermo, Varian and Waters chromatography system.
- The software has a dual-channel interface, which can receive signal whether directly from signal detector or simultaneously from both detectors.
- It is a flexible and reliable data handling system designed according to GLP norm. It is better suitable for research or other manufacturing industry.

Features

- Peak-ABC Chromatography Data Handling System is easy to operate because all you have to do is to learn the functions of these **Six working tables**. While the first two are for acquiring and processing a chromatogram, the remaining four are for identifying components; selecting an appropriate method of an analysis respectively.
- All the elements of an analysis (e.g. the acquired data signal; the integrated chromatogram; the applied integration methods; to the calculated results) are centralized in one source document called **Chromatogram file** in compliance with GLP requirements.
- These elements are intelligently structured within one screen comprising our unique **Six working tables** and a **Chromatogram frame** for your easy access and operation.
- When acquiring a data signal, we apply our patented **Noise Filtering Method** so as to detect the weakest signal close to the Baseline noise.
- When integrating a chromatogram, setting of parameters has been intelligently automated by the **Default Integration**. When applying **Manual integration** for post-acquisition processing, all you need to do is just make three clicks on the mouse within the very same screen.
- When applying Quantitative analysis, you can conveniently choose from the whole range of Quantifying methods by making just one click.
- For reporting, you can customize the report in **Word** or **WordPad** application to be inclusive of the chromatogram the various calculated statistics and the manually input external reference information.
- Fully automated via **One-stop processing** with any Auto sampler.
- Other features are **Export to Excel**, **Chromatogram compiler**, **Result table compiler**, **Save/ Load Template**, etc.

Hardware Specifications

- Connect to computer by USB Port Digital Cable, connect to instrument by Signal cable
- 24-bit high precision Analog/Digital conversion device
- Input bipolar range: $\pm 1.3V$; $\pm 4V$
- Input resistance: $> 10M\Omega$
- Linearity: $\pm 0.005\%$ of full scale
- Acquisition speed: Programmable at 1, 2, 5, 10, 20 Hz.
- Max of 60Hz is available upon request before delivery
- Integration sensitivity: $0.05\mu V \cdot s$
- Consistency: $\pm 0.005\%$
- Minimum resolution: $1\mu V$
- Accuracy more than 22 bit at 60H
- Equipped with a remote starter to be connected to analytical instrument or Auto sampler to receive the Start/Run signal

Computer Requirements

- Intel Pentium 100 or better installed with Windows 95, 98, ME, NT, 2000, or XP
- CD-ROM driver for installation of software
- VGA graphics adapter (800×600 or higher resolution is recommended)
- 16M of RAM (32M or higher is better)
- 30M free space on hard disk for software installation
- Free COM/USB port for security key

CROMTECH INDIA

1st Floor Begum Niwas, Opp Mercantile, Bank Society Colony, 5th Natwar Nagar Road, Jogeshwari (East), Mumbai 400 060.
Maharashtra - India.
Mobile: +91 98693 82134 / 81088 13320
Telefax: +91 22 2838 6028
Email: cromamumbai@mail.com / cromtechindia@mail.com / info@cromtechindia.com / sales@cromtechindia.com
Website: www.cromtechindia.com